



**WA ICON SOLUTION**

*Total Building care solutions in & out*

**WA's NO.1 LANDSCAPING**



**LANDSCAPING MASTER PLAN DESIGN/INSTALL**

**LANDSCAPING RENOVATION CONCEPTS**

**PLANT, TREE, MULCH AND ROCK INSTALLATION**

**TRANSPLANTING**

**TURFGRASS INSTALLATION AND CARE**

**PATIOS AND WALKWAYS**

**DECORATIVE STONE RETAINING WALLS**



**Excellence, creative solutions and quality craftsmanship.**



[www.waiconsolution.com.au](http://www.waiconsolution.com.au)



@waiconsolution



1800 770 777

# WHO WE ARE

**WA ICON SOLUTION** is a group of professionals in construction trade; providing ceiling and walls, tiling, flooring, painting, landscaping and builder's cleaning. We coordinate our trades with the most optimized schedule to deliver the best quality service within a competitive range of budget for our clients; both domestic and commercial clients.

We highly pride on our quality services and the wide spectrum of experience gained over the past 15 years of operating. We have successfully completed numerous projects of diverse scale and style with highly regarded builders & developers.

We are ever-restructuring our company in steps with the rapidly changing construction market to respond and adapt simultaneously.

Understanding that each market has its own unique requirements with the corresponding skill set, we aim to ensure our deliverables not only meet but go beyond fulfilling the needs of all our clients in budget, timeframe and quality, through continuous market research and reformation of the company.

## We offer various types of services to our clients. They are as follows:

- Tile Supply (selecting tiles if required) - we work with forwarding company to ensure that we provide the best price materials
- Tile materials supply
- Site Preparation (tile layout, screeding, self-leveling, waterproofing)
- Laying tiles (laying, grouting, caulking, sealing, polishing)
- Consultancy (for apartments, offices, retail shops, industrial and other commercial projects)
- After Tiling Cleaning
- Vacate Cleaning
- Emergency Cleaning Service
- Wall & Ceiling Insulation
- Painting
- Reseal wet areas/renovation
- Commercial Buildings
- Industrial Buildings
- Office Buildings
- Accommodations/Strata
- Retails
- Educational Institutes
- Entertainments
- Stadiums, Concert Halls
- Strip and Seal
- Special Floor Cleaning
- High Pressure Water Cleaning
- Carpet/Window Cleaning
- Tile & Grout Cleaning
- Reticulation
- Landscaping



# PROJECT PORTFOLIO

## COMMERCIAL & RESIDENTIAL

**LJS HOME IMPROVEMENT**  
GENERAL CONTRACTORS

**HUGO HOMES**

**BIRMINGHAM RE-DEVELOPMENT COMPANY**  
Registered Builders 5935

**DALE ALCOCK**

**KSB DEVELOPMENTS**

**COCKRAM**

**Go2 Group**  
Building • Construction • Fitouts • Refurbishments

**CONSTRUCT 360**

**THOMAS BUILDING**

**Wenham Constructions**  
Professional Builders

**DNR CONSTRUCTION, INC.**

**Crothers CONSTRUCTION**

**COMPASS HOMES WA**

**Solution4Building**

**WB**  
WEBB & BROWN-NEAVES

**Camorino Constructions**  
Built from Concept to Completion

**ADRIAN ZORZI**

**INSIDEOUT**  
BUILDINGS THAT WORK

**KREB CONSTRUCTIONS WA**

**LAMAR INDUSTRIES**

**ERBAN DEVELOPMENT**

**JCM**

**CLASSIC & CONTEMPORARY HOMES**

**ELITE COMMERCIAL FITTINGS PTY**

**BELLFORT**

**GEMMILL HOMES**

**JFK CUSTOM HOME BUILDER**

**Portrait Custom Homes**  
BUILDING RELATIONSHIPS

**SGF construction**

**alliancebuilders**

**METROCON**

**CLASSIC CONTRACTORS**

**BRINE**

**FDC**

**SGF Construction**  
Building & Carpentry

# PROJECT PORTFOLIO

## COMMERCIAL



Perth Apartment  
70 Mounts Street, Perth



Park Avenue Apartment  
98 Exclusive Apartments 4 Levels, Churchlands



South Perth Apartment  
57 Swanview Terrace, South Perth



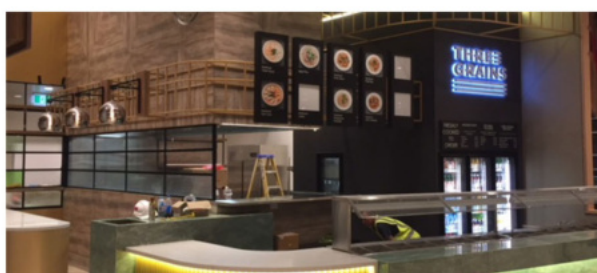
Seven Eleven  
Hale Village



Maylands Apartment  
83 Caledonian Avenue, Maylands



Mandurah Forum Three gains  
330 Pinjarra Road, Mandurah



South Terrace,  
Fremantle



# PROJECT PORTFOLIO

## COMMERCIAL



- Mounts St, Perth



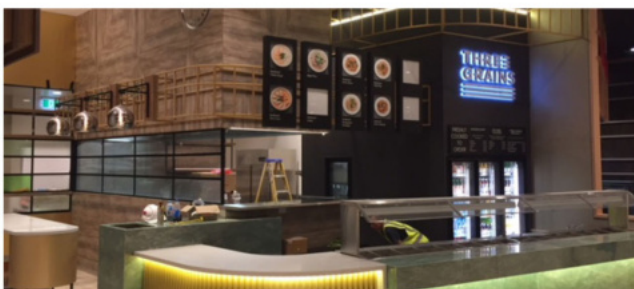
- Buxton Street, Mt Hawthorn



- Third Ave, Mount Lawley



- Narran Place, Swan view



- Three Grain, Mandurah Forum Fitout



- Moresby St, Kensington



- Blundell St, Dayton



# PROJECT PORTFOLIO

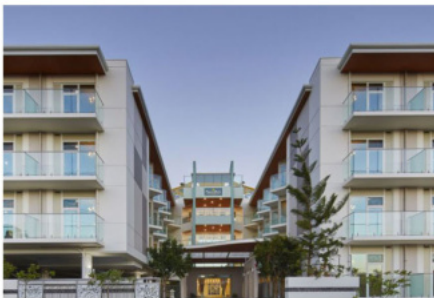
## COMMERCIAL



North Metro TAFE  
30 Aberdeen Street, Northbridge



Shenton College  
227 stubbs Terrace, Shenton Park

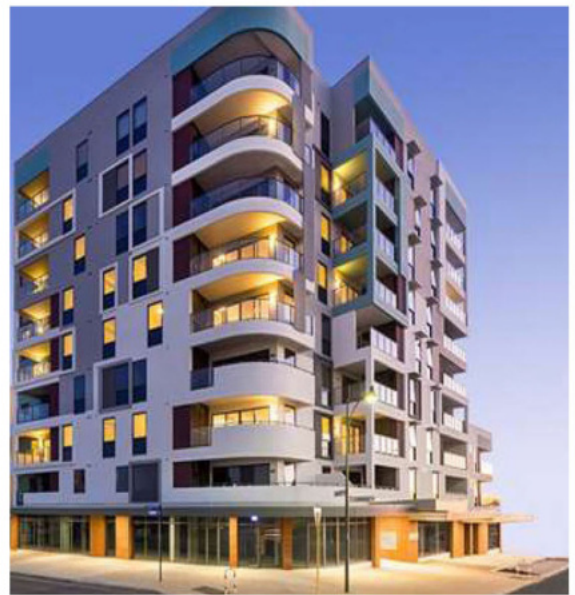


Regents Garden Aged Care  
21 Wheatcroft Street, Scarborough

UWA dormitory, 140 rooms  
44 Mounts Bay Road, Crawley



Cockburn Luxe Apartments  
140 Exclusive Apartments 8 Levels Junction Blvd,  
Cockburn Central



St Lves Retirement Village Renovation  
44 Rome Road, Myaree



# PROJECT PORTFOLIO

## RESIDENTIAL



Gladstone Road, Rivervale



Third Ave, Mount Lawley



Buxton Street, Mount Hawthorn



Drake St, Bayswater

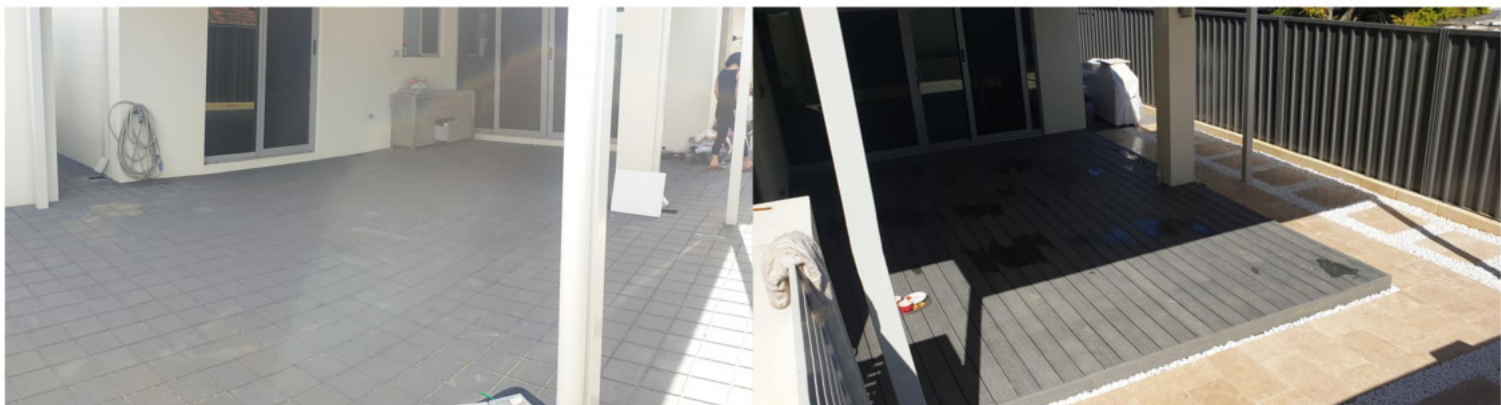


- Andross Way, Noranda
- Catherine St, Safety Bay
- Eva St, Maddington
- Macrae Rd, Applecross
- Thomson St, Mandurah
- Blundell St, Dayton
- Eva St, Maddington



# PHOTO GALLERY

## BEFORE & AFTER



Before & After



Before & After



Before & After





# PHOTO GALLERY

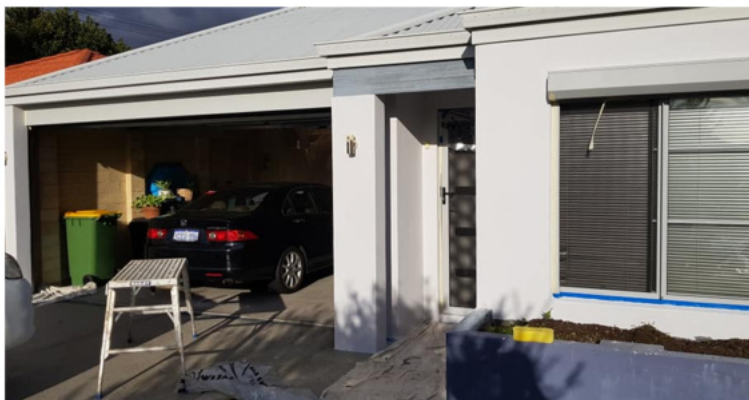
## BEFORE & AFTER



Before & After



Before & After



Before & After

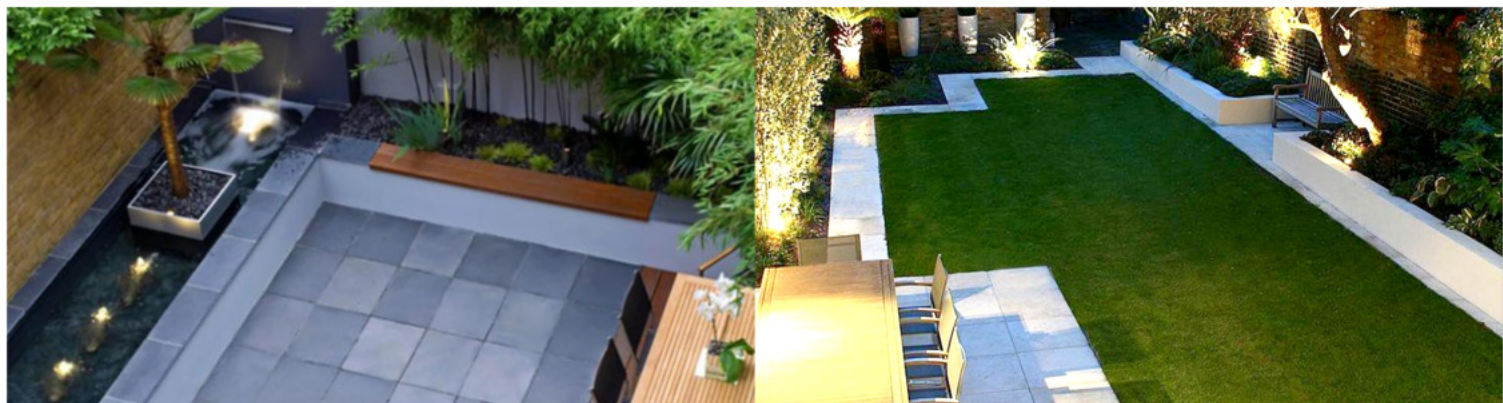


# PHOTO GALLERY

## BEFORE & AFTER



Before & After



Before & After



Before & After

# PHOTO GALLERY

## AFTER



[www.waiconsolution.com.au](http://www.waiconsolution.com.au)



@waiconsolution



1800 770 777

# PHOTO GALLERY

## AFTER



# Landscaping PRICE LIST #1

## Landscaping Pricelist

Type	Description	Measure	Rate
*Mulching	Mulching	sqm	from \$15
*Retaining Wall	Laying & Cutting	block	TBC
*Garden Bed	Laying & Cutting	block/brick	TBC \$10 (Maxibrick) \$15 (Facebrick) \$25 (Block)
*Planter Box	Laying & Cutting	block/brick	\$10 (Maxibrick) \$13 (Facebrick) \$35 (Block)
Letter Box	Customised Face Plate - Aluminium	EA	from \$350
	Brick (Minimum)	EA	from \$650
	Limestone	EA	from \$750
	Render - Cement	EA	from \$150
	Render - Texture finish	EA	from \$280
*Boundary Fence	Brick	unit	\$5 (Maxibrick) \$6 (Facebrick)
			Limestone
	Render - Cement (Minimum)	daily labour	
	Render - Texture Finish	sqm	\$32
	Fencing - Aluminium	lm	from \$185
	Fencing - Tubular	lm	from \$145

**\*Ground Preparation, soil conditioning and concrete footing for all types are shown on the Pricelist #3.**

# Landscaping PRICE LIST #2

## Landscaping Pricelist

Type	Description	Measure	Rate
Gate	Automatic (Sliding)	EA	from \$6500
	Manual Swing - Aluminium	EA	from \$3300
	Manual Swing - Tubular	EA	from \$2900
*Decking	Frame Work	sqm	from \$115
	Composite	sqm	from \$195
	Hard Wood	sqm	from \$175
	Soft Wood	sqm	from \$145
*Artificial Grass	Cutting & Joining	sqm	from \$45
*Natural Grass	Reticulation - Tap (Inc. single controller)	EA	from \$450
	Reticulation - (Main Water Metrer + controller)	EA	from \$1150
	Pipe Work	lm	\$19
	Kikuyu/Winter Green (Couch)	sqm	\$20
	Palmeto/Buffalo	sqm	\$25
	*Planting	Planting	unit
Removal	Leveling	daily labour	\$850
	Waste Handling	cubic	\$60

**\*Ground Preparation, soil conditioning and concrete footing for all types are shown on the next page.**

# Landscaping PRICE LIST #3

## Landscaping Pricelist

Type	Ground Preparation	Soil Conditioning	Concrete Footing
Mulching	\$80/h	from \$15/sqm	
Retaining Wall	\$80/h		\$77/sqm
Garden Bed	\$80/h		\$77/sqm
Planter Box	\$80/h		\$77/sqm
Boundary Fence	\$80/h		\$77/sqm
Decking	\$80/h		
Artificial Grass	\$80/h		
Natural Grass	\$80/h	from \$15/sqm	
Planting		from \$15/sqm	

### \*NOTE

*This price is WA ICON Landscaping Price.*

1. Prices may vary depending on the areas and conditions of work.

### MATERIALS SUPPLIED FROM:





**WA ICON SOLUTION**

*Total Building care solutions in & out*



1b/11 Anvil Way, Welshpool WA 6106

## Landscaping Division

**Chi Ho Lee** Operation Manager

[landscaping@waiconsolution.com.au](mailto:landscaping@waiconsolution.com.au)

 @waiconsolution

 [www.waiconsolution.com.au](http://www.waiconsolution.com.au)

 1800 770 777

## WA's NO.1 LANDSCAPING

*"Excellence solutions and quality craftsmanship"*

### CONTACT US

**John Lee** Marketing Manager

[info@waiconsolution.com.au](mailto:info@waiconsolution.com.au)

**Johnny Jung, Hwan Lee** Estimator

[estimate@waiconsolution.com.au](mailto:estimate@waiconsolution.com.au)

**Danny Yoon** Project Manager

[danny@waiconsolution.com.au](mailto:danny@waiconsolution.com.au)

**Han Jung** Contract Administrator

[han@waiconsolution.com.au](mailto:han@waiconsolution.com.au)

**Daniel Kim** Accounts

[account@waiconsolution.com.au](mailto:account@waiconsolution.com.au)